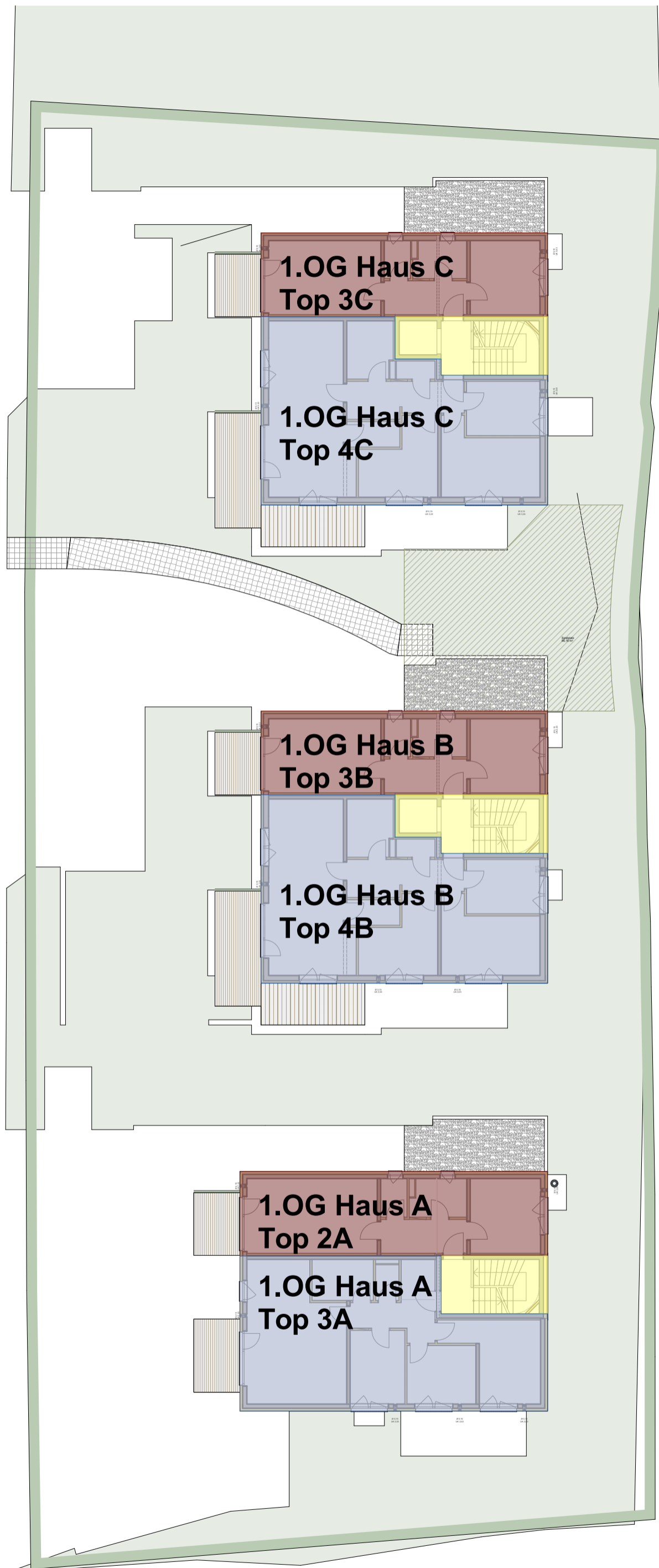


### TOP 4C

WNFL	86,19 m <sup>2</sup>
Balkon/Terrasse	22,03 m <sup>2</sup>
Kellerabteil	8,04 m <sup>2</sup>
<b>SUMME</b>	<b>116,26 m<sup>2</sup></b>





HAUS B

7C

5C

6C

2C

4C

1C

2C

WESTANSICHT